

Secondary 2020 Research

Convertible shawl



Wearable Face Projector



A small beamer projects a different appearance on your face, giving you a completely new appearance.

<http://jingcailiu.com/?portfolio=wearable-face-projector>

Geometric Waves - a changeable textile



Geometric Wave is a conceptual project that explores the possibility of transforming a textile in behavior and color over time in the hands of a user. The textile is knitted on an industrial knitting machine with different white fibers. Knitting with a technique that allows the textile to get a 3-dimensional shape when threads are dragged from behind.

<https://vimeo.com/150768788>

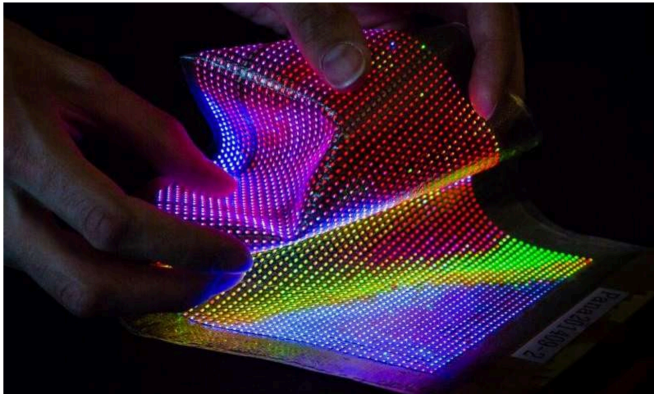
AteGau: Projector-Based Online Fashion Coordination System



AteGau system enables intuitive fashion coordination using both clothes from an online store and clothes from the user's own wardrobe.

<https://www.youtube.com/watch?v=GkmlmKMn9sE>

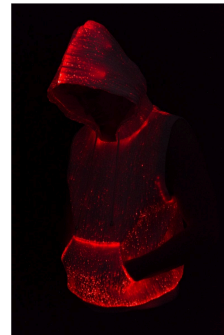
Led textiles



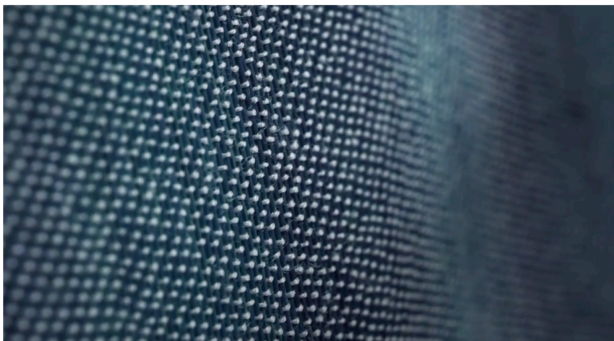
Researchers from Holst Centre (set up by TNO and imec), imec and CMST, imec's associated lab at Ghent University, have demonstrated the world's first stretchable and conformable thin-film transistor (TFT) driven LED display laminated into textiles. This paves the way to wearable displays in clothing providing users with feedback.

Led hoodie

<https://www.etsy.com/listing/466910686/led-hoodie-light-up-hoodie-unique>



ChroMorphous Color Changing Fabric



ChroMorphous is a new innovation in the textile industry. Our fabric is an active, user-controlled, color-changing eTextile. With ChroMorphous color-changing fabric, you can control the color and patterns of your clothing and accessories at any time, using only your smartphone.

<http://www.chromorphous.com/>